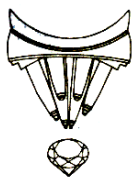


DR. EDWARD GÜBELIN Gemmologist, C. G., F. G. A.

Honorary Professor of the University of Stellenbosch



Telephone 041 - 37 11 77
Cables: Gubelin

«Ratna Mahal»
Benzholzstr. 11
CH - 6045 MEGGEN LU
(Switzerland)

Mr. Tay Thye Sun, GG,
Director,
ELVIN GEMS PTE. LTD.,
79 Jalan Taman

SINGAPORE 1232

Your letter 20.4.88

Your ref.

My ref. EG/mr

Meggen, April 27th, 1988

Dear Mr. Tay,

Please accept not only my genuine thanks, but also my enthusiastic congratulations on your latest results of interesting research of the chemical distinction between rubies from Burma and Thailand.

I am very grateful to you for sending me a reprint of your publication and thus informing me of this profound masterpiece of research. Although Burmese and Thai rubies may be distinguished relatively easily optically in most cases by examination through the microscope, analyses such as those carried out by your good self and your co-workers offer the possibility of an absolutely definite distinction and proof thereof. In a law court it is perhaps extremely difficult to convince a judge who knows nothing of microscopic distinctions, of the optical differences, while he might be much more impressed by the chemical differences and accept these as a corroboration.

In a book about gemstones which I published 20 years ago, I mentioned the differences of the V, Cr, and Fe contents in Burmese and Thai rubies, and you have now established these most accurately by means of figures. I am extremely happy to learn from your publication that you continue to be keenly interested in gemmological research, and I truly hope that you will also continue to contribute so valuably to a more intrinsic knowledge of gemstones.

I am also doing a little research from time to time. At the moment I am particularly interested in establishing reliable differences between the alexandrites from various localities. It was the new discovery of extremely beautiful alexandrites near Hematita in Brazil which prompted me to investigate along these lines. The majority of the new Hematita alexandrites are so clean that it is difficult to distinguish them from synthetic alexandrites.

Some time ago I acquired a dark blue faceted gem from Sri Lanka which was offered to me as blue idocrase. Upon examination I found it could just as well be sapphirine. However, a careful EDX analysis yielded elements which corresponded with neither idocrase nor sapphirine. So far we do not know what it is, but it may in the end prove to be a new Sri Lankan gem.

With my renewed thanks for so kindly remembering me and my interests, I remain with all good wishes and kindest regards,

Yours most sincerely

Dr. E. Gübelin. C.G.. F.G.A.